

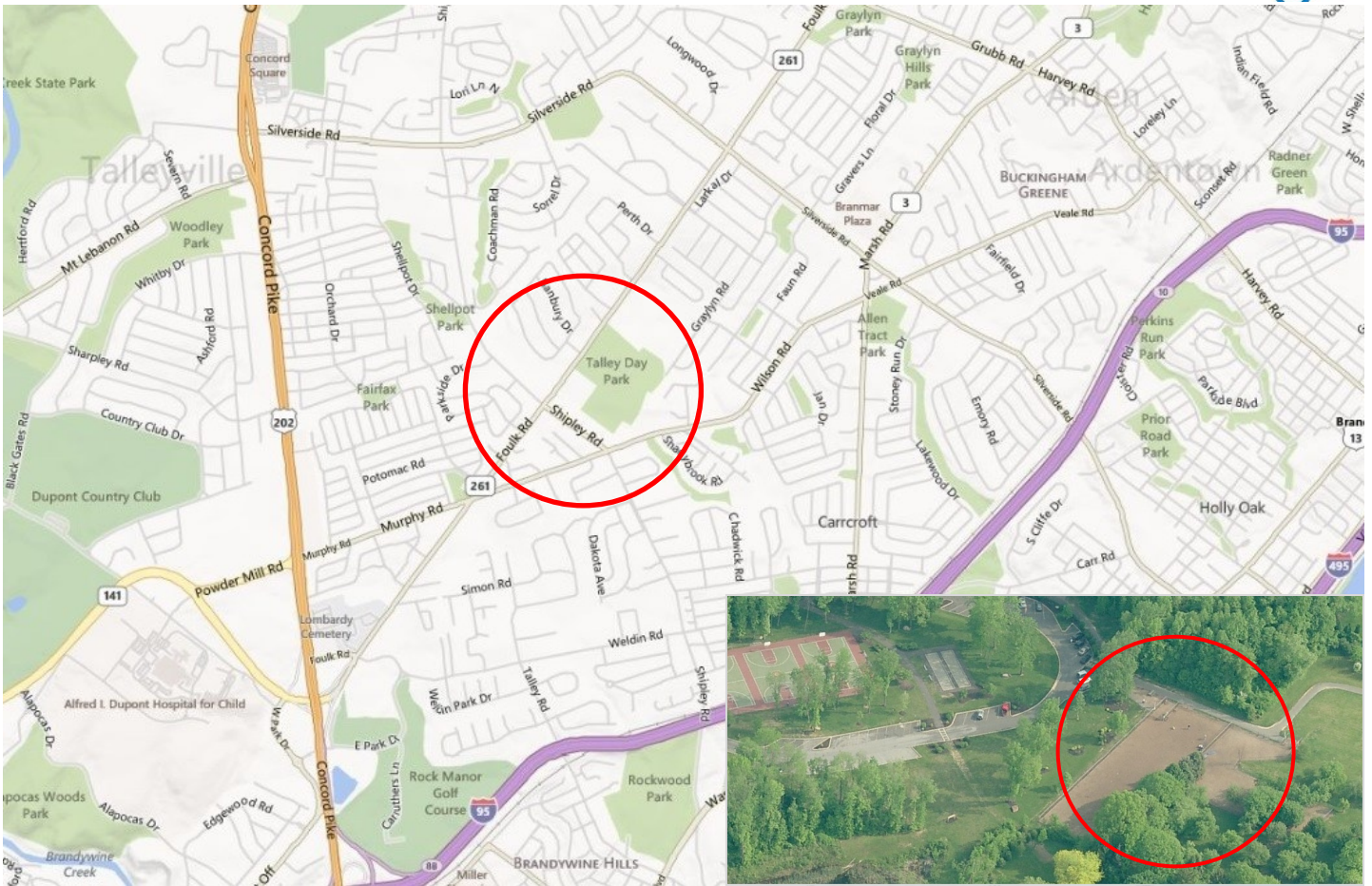
TALLEY DAY PARK

BARK PARK

New Castle County, Delaware



bing maps



- Talley Day Park is off Foulk Road, just south of Brandywine High School. The Bark Park is located in the back of the park, behind the Brandywine Hundred Library, adjacent to the bocce ball courts.
- The park is open 7 days a week from dawn until dusk.
- For more information, please visit the New Castle County website: www.nccde.org

We hope you enjoy your time at the park. Send us a photo!

Dave Iliff
TEAM